

# AVAILABLE INDUSTRIAL SITE

HUBBARD PROPERTY  
ALABAMA HIGHWAY 21, TALLADEGA, TALLADEGA, AL, 35150



## Description

## Comments

### Sale / Lease

For Sale: Yes  
Sale Price: \$ 7,500.00  
Pricing Information:

### Utilities

Electric Provider: Alabama Power Company  
Electric Provider 2:  
Natural Gas Provider: Spire (existing)  
Natural Gas Size of Main: 4"  
Water Provider: Talladega Water & Sewer  
Water Size of Main: 8"  
Telecommunications Provider:  
Fiber Available:  
DSL Available:  
Sewer Provider: Talladega Water & Sewer  
Sewer Size of Main: 8"

### Zoning

Zoning: None

### Port

Nearest Port:  
Dock Distance:

### Property Details

Latitude: 33.457917  
Longitude: -86.045722  
Total Acreage: 55 Acre(s)  
Available Acres:  
Largest Tract Available:  
Smallest Tract Available:  
Expandable:  
Wetlands:  
Phase 1  
Audit Done: Yes

### Interstate/Highway

Interstate:  
To Interstate (miles):  
Interstate #2:  
To Interstate #2 (miles):  
Highway:  
To Highway (miles):  
State Highway:  
To State Highway (miles):

### Rail

Carrier:  
Rail 1 Track Status:  
Rail 2 Track Status:

## Advantage Alabama

**6** Interstates converge in Alabama

**All** Communities within 2 hours of a commercial airport

**92** Public-use airports

**5** Class 1 railroads and multiple short line railroads

Deep water port on the Gulf of Mexico

One of the longest inland waterway systems

Right-To-Work state

**WIN** with Alabama

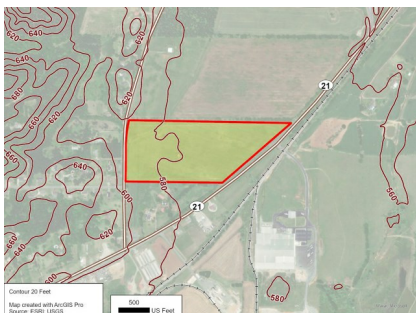
For more information, please contact:

Talladega County Economic Development Authority  
Calvin Miller  
(256) 245-8332  
millercalv@tceda.com

Economic Development Partnership of Alabama  
1320 1st Avenue South  
Birmingham, AL 35233  
Greg Blalock  
Project Director  
P 205.943.4700  
gblalock@edpa.org  
<https://www.edpa.org>

# AVAILABLE INDUSTRIAL SITE

HUBBARD PROPERTY  
ALABAMA HIGHWAY 21, TALLADEGA, TALLADEGA, AL, 35150



## Advantage Alabama

**6** Interstates converge in Alabama

**All** Communities within 2 hours of a commercial airport

**92** Public-use airports

**5** Class 1 railroads and multiple short line railroads

Deep water port on the Gulf of Mexico

One of the longest inland waterway systems

Right-To-Work state

# WIN

 with Alabama

For more information, please contact:

Talladega County Economic Development Authority  
Calvin Miller  
(256) 245-8332  
millercalv@tceda.com

Economic Development Partnership of Alabama  
1320 1st Avenue South  
Birmingham, AL 35233  
Greg Blalock  
Project Director  
P 205.943.4700  
gblalock@edpa.org  
<https://www.edpa.org>