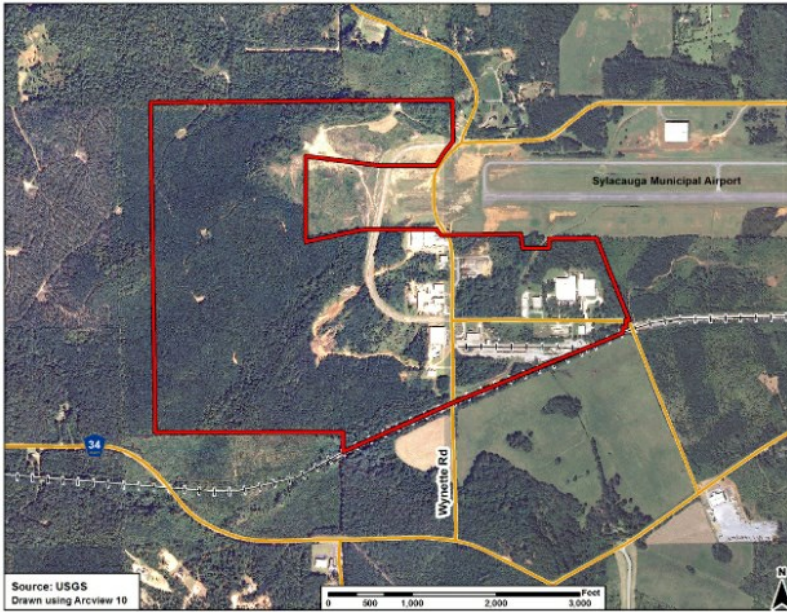


# AVAILABLE INDUSTRIAL SITE

## SYLACAUGA INDUSTRIAL PARK



Hill Road and Wynette Rd., Sylacauga, Talladega, AL, 35150

### Sale / Lease

**For Sale:** Yes  
**Sale Price:** \$ 5,000.00 per acre  
**Pricing Information:**

### Zoning

**Zoning:**

### Property Details

**Latitude:** 33.167500  
**Longitude:** -86.308500  
**Total Acreage:** 340 Acre(s)  
**Available Acres:** 200 Acre(s)  
**Largest Tract Available:** 25 Acre(s)  
**Smallest Tract Available:** 5 Acre(s)  
**Expandable:** No  
**Wetlands:**  
**Phase 1**  
**Audit Done:** Yes

### Description

For more information, please contact: Calvin Miller, 256.245.8335, millercalv@tceda.com



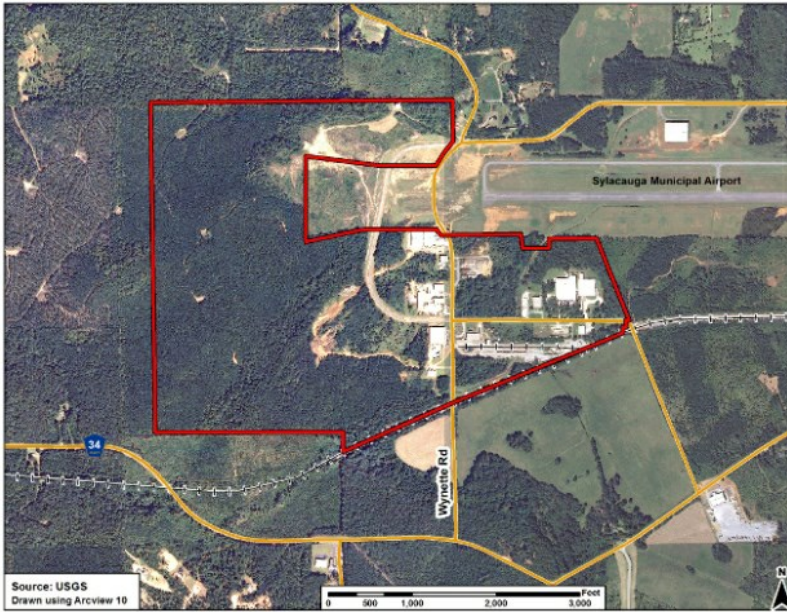
**For more information, please contact:**

**Talladega County Economic Development Authority**  
Calvin Miller  
(256) 245-8332  
millercalv@tceda.com

**Economic Development Partnership of Alabama**  
1320 1st Avenue South  
Birmingham, AL 35233  
P 205.943.4700  
gblalock@edpa.org  
<https://www.edpa.org>

# AVAILABLE INDUSTRIAL SITE

## SYLACAUGA INDUSTRIAL PARK



Hill Road and Wynnete Rd., Sylacauga, Talladega, AL, 35150

### Interstate/Highway

**Interstate:** I-65  
**To Interstate (miles):** 45 Mile(s)  
**Interstate #2:** I-459  
**To Interstate #2 (miles):** 38.00 Mile(s)  
**Highway:** 21  
**To Highway (miles):** 2.00 Mile(s)

### Rail

**Carrier:** CSX Transportation

### Electric

**Provider:** Sylacauga Utilities Board

### Natural Gas

**Provider:** Sylacauga Utilities Board  
**Pressure (bars):**  
**Size of Main:** 4"

### Water

**Provider:** Sylacauga Utilities Board  
**Size of Main:** 12"

### Telecommunications

**Provider:** AT&T  
**Fiber Available:** Yes  
**DSL Available:** Yes

### Sewer

**Provider:** Sylacauga Utilities Board  
**Size of Main:** 6"



**For more information, please contact:**

**Talladega County Economic Development Authority**  
**Calvin Miller**  
**(256) 245-8332**  
**millercalv@tceda.com**

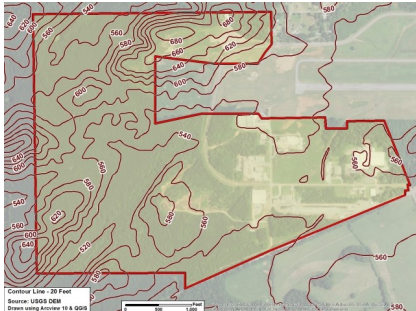
**Economic Development Partnership of Alabama**  
**1320 1st Avenue South**  
**Birmingham, AL 35233**  
**P 205.943.4700**  
**gblalock@edpa.org**  
**<https://www.edpa.org>**

# AVAILABLE INDUSTRIAL SITE

## SYLACAUGA INDUSTRIAL PARK



Hill Road and Wynette Rd., Sylacauga, Talladega, AL, 35150



**For more information, please contact:**

Talladega County Economic Development  
Authority  
Calvin Miller  
(256) 245-8332  
millercalv@tceda.com

Economic Development Partnership of  
Alabama  
1320 1st Avenue South  
Birmingham, AL 35233  
P 205.943.4700  
gblalock@edpa.org  
<https://www.edpa.org>