

# AVAILABLE RAIL SERVED SITE

DOBBINS 35



Sylacauga Fayetteville Highway, Sylacauga, Talladega, AL, 35151

## Sale / Lease

**For Sale:** Yes  
**Sale Price:** \$ 25,000.00 per acre  
**Pricing Information:**

## Zoning

**Zoning:** None

## Property Details

**Latitude:** 33.161080  
**Longitude:** -86.315880  
**Total Acreage:** 35 Acre(s)  
**Available Acres:** 35 Acre(s)  
**Largest Tract Available:** 35 Acre(s)  
**Smallest Tract Available:** 35 Acre(s)  
**Expandable:**  
**Wetlands:** No  
**Phase 1 Audit Done:** No

## Description

Dual rail served site

**For more information, please contact:**

Talladega County Economic Development Authority  
Calvin Miller  
(256) 245-8332  
millercalv@tceda.com

Economic Development Partnership of Alabama  
1320 1st Avenue South  
Birmingham, AL 35233  
P 205.943.4700  
gblalock@edpa.org  
<https://www.edpa.org>

# AVAILABLE RAIL SERVED SITE

DOBBINS 35



Sylacauga Fayetteville Highway, Sylacauga, Talladega, AL, 35151

## Interstate/Highway

**Interstate:** I-65  
**To Interstate (miles):** 44 Mile(s)  
**Interstate #2:** I-20  
**To Interstate #2 (miles):** 47.00 Mile(s)  
**Highway:** 21  
**To Highway (miles):** 5.00 Mile(s)

## Rail

**Carrier:** CSX Transportation

## Electric

**Provider:** Alabama Power Company

## Natural Gas

**Provider:** Sylacauga Utilities Board  
**Pressure (bars):** 200 Psi  
**Size of Main:** 4"

## Water

**Provider:** Sylacauga Utilities Board  
**Size of Main:** 16"

## Telecommunications

**Provider:** Sylacauga Utilities Board  
**Fiber Available:** Yes  
**DSL Available:**

## Sewer

**Provider:** Sylacauga Utilities Board  
**Size of Main:** 8"



**For more information, please contact:**

**Talladega County Economic Development Authority**  
**Calvin Miller**  
**(256) 245-8332**  
**millercalv@tceda.com**

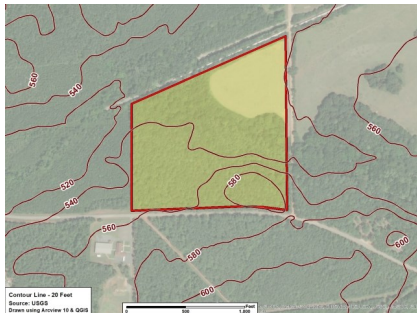
**Economic Development Partnership of Alabama**  
**1320 1st Avenue South**  
**Birmingham, AL 35233**  
**P 205.943.4700**  
**gblalock@edpa.org**  
**<https://www.edpa.org>**

# AVAILABLE RAIL SERVED SITE

## DOBBINS 35



Sylacauga Fayetteville Highway, Sylacauga, Talladega, AL, 35151



**For more information, please contact:**

**Talladega County Economic Development  
Authority  
Calvin Miller  
(256) 245-8332  
millercalv@tceda.com**

**Economic Development Partnership of  
Alabama  
1320 1st Avenue South  
Birmingham, AL 35233  
P 205.943.4700  
gblalock@edpa.org  
<https://www.edpa.org>**