

AVAILABLE ADVANTAGESITE SITE
CHILDERSBURG IP ADVANTAGE SITE



Highway 235, Childersburg, Talladega, AL, 35044

Sale / Lease

For Sale: Yes
Sale Price: \$ 10,000.00 per acre
Pricing Information:

Zoning

Zoning: Heavy Industry

Property Details

Latitude: 33.348700
Longitude: -86.337300
Total Acreage: 115 Acre(s)
Available Acres: 115 Acre(s)
Largest Tract Available: 115 Acre(s)
Smallest Tract Available: 5 Acre(s)
Expandable: Yes
Wetlands: Yes
Phase 1 Audit Done: Yes

Description

This site is Norfolk Southern NS Prime Industrial Site. For more information, please contact: Calvin Miller, 256.245.8332, millercalv@tceda.com



For more information, please contact:

Talladega County Economic Development Authority
Calvin Miller
(256) 245-8332
millercalv@tceda.com

Economic Development Partnership of Alabama
1320 1st Avenue South
Birmingham, AL 35233
P 205.943.4700
gblalock@edpa.org
<https://www.edpa.org>

AVAILABLE ADVANTAGESITE SITE

CHILDERSBURG IP ADVANTAGE SITE



Highway 235, Childersburg, Talladega, AL, 35044

Interstate/Highway

Interstate: I-20
To Interstate (miles): 40 Mile(s)
Interstate #2: I-459
To Interstate #2 (miles): 35.00 Mile(s)
Highway: 235
To Highway (miles): On-Site

Rail

Carrier: Norfolk Southern

Electric

Provider: Alabama Power Company

Natural Gas

Provider: Childersburg Wt, Gas, & Sew Bd
Pressure (bars): 500 Psi
Size of Main: 10"

Water

Provider: Childersburg Wt, Gas, & Sew Bd
Size of Main: 8"

Telecommunications

Provider: AT&T
Fiber Available: Yes
DSL Available: Yes

Sewer

Provider:
Size of Main:



For more information, please contact:

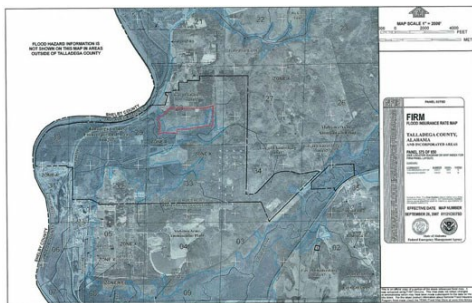
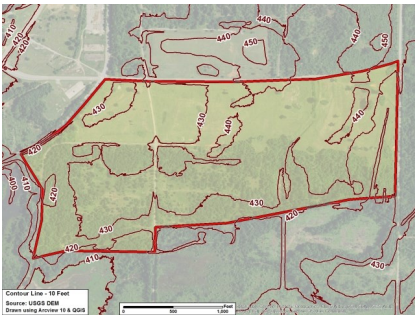
Talladega County Economic Development Authority
Calvin Miller
(256) 245-8332
millercalv@tceda.com

Economic Development Partnership of Alabama
1320 1st Avenue South
Birmingham, AL 35233
P 205.943.4700
gblalock@edpa.org
<https://www.edpa.org>

AVAILABLE ADVANTAGESITE SITE
CHILDERSBURG IP ADVANTAGE SITE



Highway 235, Childersburg, Talladega, AL, 35044



For more information, please contact:

Talladega County Economic Development Authority
Calvin Miller
(256) 245-8332
millercalv@tceda.com

Economic Development Partnership of Alabama
1320 1st Avenue South
Birmingham, AL 35233
P 205.943.4700
gblalock@edpa.org
<https://www.edpa.org>